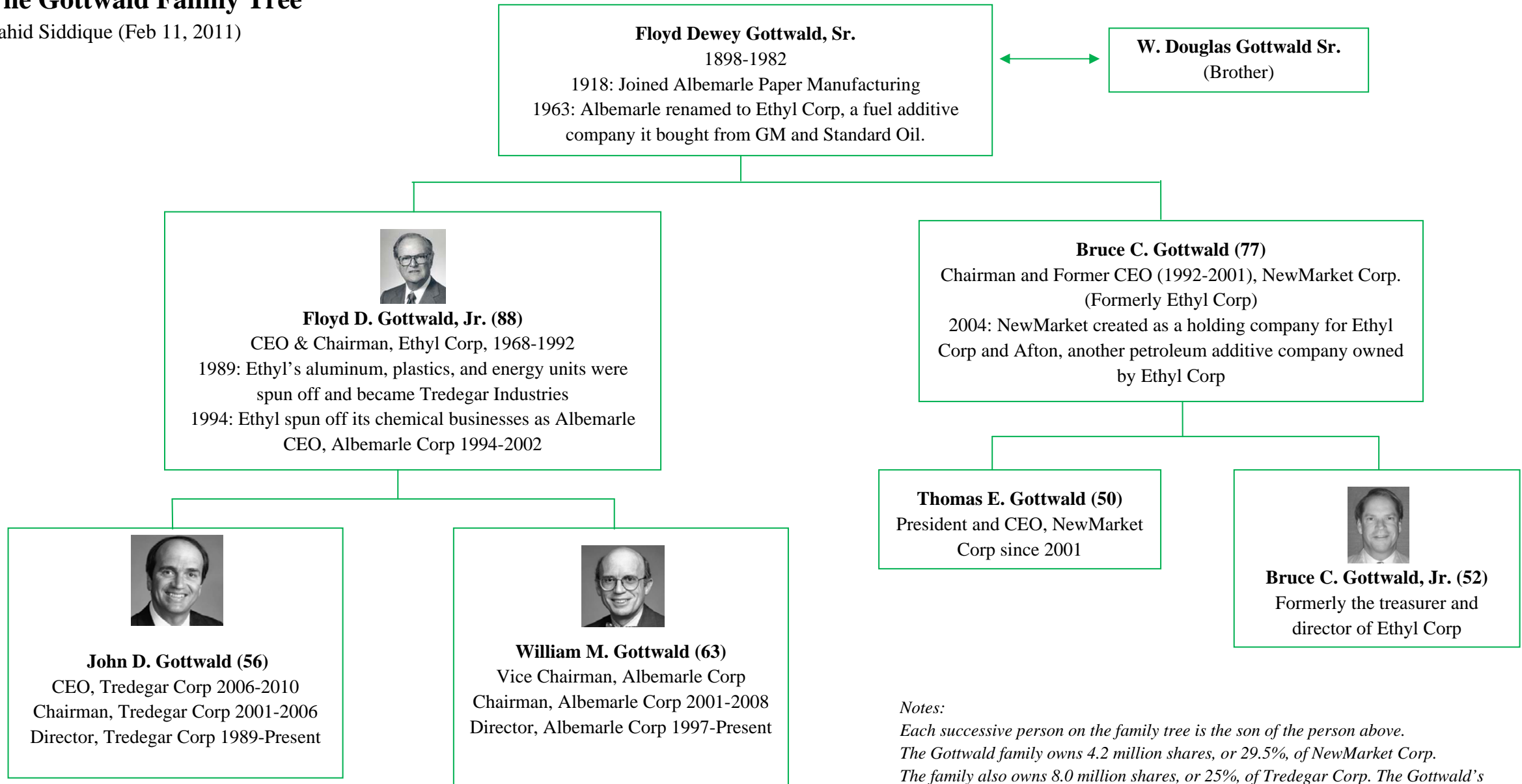


The Gottwald Family Tree

Zahid Siddique (Feb 11, 2011)



Notes:
 Each successive person on the family tree is the son of the person above.
 The Gottwald family owns 4.2 million shares, or 29.5%, of NewMarket Corp.
 The family also owns 8.0 million shares, or 25%, of Tredegar Corp. The Gottwald's ownership of Albemarle Corp. is not material.